



TRUSTED NAME FOR MBBS ABROAD

Study MBBS in Belarus



Find the best medical university for you

POPULAR COUNTRIES TO STUDY ABROAD



Philippines



Bangladesh



Ukraine



Georgia



Kazakhstan



Russia



Belarus



China



Kyrgyzstan



Poland



MOCK TEST



"I believe that it is the right of the student to have genuine information about the course where she/he wishes to apply. Book My University ensures that this right of the student is protected and performed.

Yukti Belwal
 Founder, BookMyUniversity.com



TRUSTED
 MBBS ABROAD
 CONSULTANCY



AUTHORIZED TO PROVIDE
 VERIFIED INFORMATION



NO FAKE PROMISES
 NO HIDDEN CHARGES



GET FASTEST ADMISSION
 PROCESS DONE



BMU TOLL FREE
1800-270-8009



MBBS ABROAD



FOLLOW
Yukti Belwal

Instagram: [Yukti_MBBS](#)
 YouTube: [/YUKTIBELWAL](#)
 WhatsApp: [9953262629](#)

about BMU

Book My University was incepted a few years back but it took shape recently when digitalisation of the admission process became the need of the hour. This is just not a website, its an initiative. An initiative to bring transparency across borders for making the process of getting education easy, safe and authentic.

Why choose BMU?

Education is one of the basic necessities of life and one of the factors that shapes a person's future. Education knows no boundaries.

We at BMU, have understood how essential it is for you to have the right kind of support to pursue a study abroad programme.

We offer you end to end support including in depth research to identify a university that suits your needs, to processing your admission; taking care of your visa & travel arrangements.

In short, we are consultants of choice for a seamless journey to an education of your dreams.

Choose your study abroad Consultant wisely to make an informed decision.



most promising **study abroad** consultancy

2016



2017



2019



WHY CHOOSE BMU

- An award winning education consultancy
- Headed by experienced professionals in the field
- First and only consultancy to provide genuine information through awareness initiatives thereby Ensuring transparency
- Admired by students for genuinely working, not over charging or embedding hidden costs in our consultancy fee
- Known to have gained a reputation in a short span of time
- Targeting to bring more medical universities around the world for indian students with an aim to help eradicate the scarcity of doctors in India



Eligibility Criteria for MBBS ABROAD

- Minimum age to apply is 17 years by 31st Dec of the admission year.
- Minimum percentage required to apply is 50% in the subjects Physics, Chemistry and Biology for General Category and 40% for reserved category SC, ST and OBC.
- A valid passport.
- From 2018 onwards, qualifying NEET examination is mandatory for studying MBBS abroad.

Why Study Abroad?

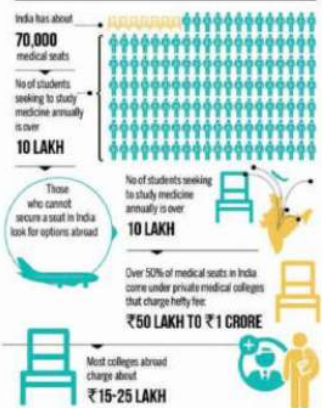
- Tuition fee starts from Rs. 2 lakhs on wards per year
- No donation or capitation fee is to be paid
- Universities recognised by Medical Council of India (MCI) and World Health Organisation (WHO).
- Degree is internationally valid and accepted

Indian Graduates with Foreign Medical Degrees – What does the law say?

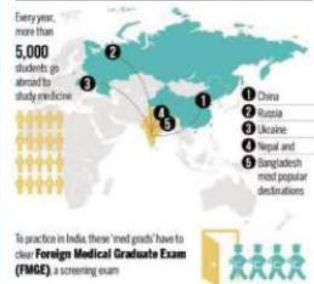
Indian students can seek medical qualification from any recognized medical education institution in a foreign country. To be able to practice in India after obtaining their degree abroad, the students are required to register with the State Medical Council (SMC). Further, SMCs register a student with foreign medical qualification only after he appears and gets through the Foreign Medical Graduate Examination (FMGE) conducted by the National Board of Examination (NBE). The FMGE is conducted twice a year in June & December and a candidate has to score a minimum of 50% marks in each of the papers to be declared passed. A candidate has a maximum of 3 attempts to pass the examination.

This is a statutory requirement as per section 13(4A) of the Indian Medical Council Act, 1956 amended in 2002. Those who hold an under graduate as well as post graduate medical degree from the following countries need not take the FMGE and they can directly be registered by the SMCs. This is applied until NeXT.

WHY DO MEDICAL ASPIRANTS GO ABROAD?



PARIAHS OF MEDICAL COMMUNITY IN INDIA



COUNTRIES EXEMPTED FROM FMGE

- Australia
- Canada
- New Zealand
- United Kingdom
- United States of America

All these countries do not provide direct admission, student has to give their entrance examination and per year fee starts from Rs. 18 to 30 lakhs

What is ECTS? The European Credit Transfer and Accumulation System (ECTS) was first introduced in Europe in 1989 within the framework of the ERASMUS Programme (at the present moment SOCRATES Programme) providing for integrated interstate educational results, academic recognition and giving credit in the subject studied, assessment and comparison procedures. The ECTS aims at study qualification recognition support not only within one country but also in other countries - participants of Bologna Process. The ECTS is a person-oriented system which is directed at a greater degree of clarity in the comparison of results through educational processes.

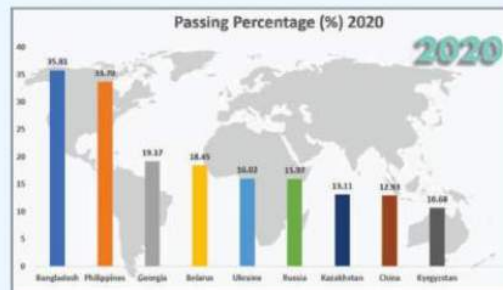
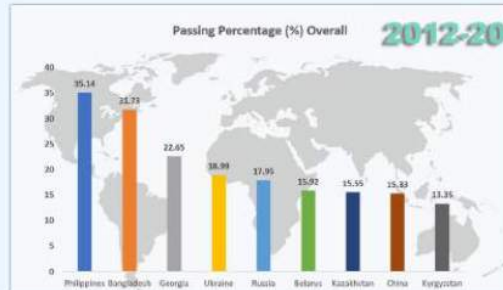
USMLE EXAM PATTERN

Medical School	USMLE	Location	Type of Exam	Exam Fee
1st to 3rd year Basic sciences	USMLE Exam step 1 can be taken at the end of the 3rd year in medical school	In your home country or in the country of your medical school	Multiple choice exam (objective questions)	USD 820
4th & 5th year Clinical years	USMLE Step 2 CK can be taken at the end of the 5th year in medical school			USD 820
Upon graduation	You're now ready to take the USMLE Step 2 CS	Exam are conducted only in the United states of America	USMLE Step 2 CS is designed to assess clinical skills through simulated patient interactions, in which the examinee interacts with standardized patients portrayed by actors. Each examinee faces 12 Standardized Patients (SPs)	USD 1440

We don't offer cheap packages we provide best counselling and make you choose college as per your budget and profile.



How many students passed the Screening Test (FMGE) Overall, 2019 & 2020



National Exit Test for Final-Year MBBS Students to be Held in 2023: NMC

The National Exit Test (NExT) will be conducted in the first half of 2023, informed Union Minister of Health and Family Welfare, Mansukh Mandaviya. The decision was made in a review meeting with the National Medical Commission (NMC) on July 30.

Govt is committed to creating quality Medical Education, Transparent Examination infrastructure and Health Services, said Mandaviya.

The results of NExT both steps 1 and 2 will be used for the qualifying final MBBS exam, to get a license for practising medicine in India as well as for the merit-based allocation of postgraduate (PG) seats in broad specialties. The exam will be the same for everyone whether trained in India or outside, thus solving the problem of foreign medical graduates (FMGs) / Mutual recognition, the health ministry said.

A mock exam will also be conducted in 2022 to prepare the students for the first-ever NeXT. "As apprised by officials of NMC in the meeting, efforts are underway to ensure that the National Exit Test (NExT) will be conducted in the first half of 2023 as per the roadmap. To test the procedure and remove anxiety among medical students, a Mock Run is also being planned and will be conducted in 2022.," the ministry added.

During the review meeting, the ways to conduct NExT in a world-class manner were also discussed and deliberated. While addressing the meeting, Mandaviya also said that the government "is committed to creating quality medical education and transparent examination infrastructure and health services and is relentlessly working with all stakeholders to achieve this objective."



Vitebsk

Vitebsk ranks fourth among the biggest cities in Belarus. It is the capital of the country's Vitebsk Region and served by the Vitebsk Vostochny Airport. The Annunciation Church, one of the oldest buildings in the country is located here and is an important tourist spot in the city.

Belarus is the

BELARUS QUICK FACTS

Republic of Belarus
Рэспубліка Беларусь (Belarusian)
Республика Беларусь (Russian)

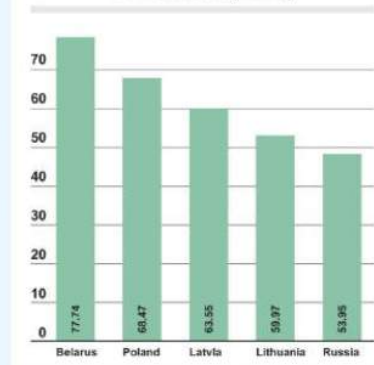
Capital : Minsk
Population : 2018 estimate - 95 Lakhs
Currency : Belarusian ruble (1 BYN=30 INR)
Time diff. : IST-2:30
Calling code : +375
Internet TLD : .by



Grodno

Grodno is a western Belarusian city that is located close to the country's borders of Lithuania and Poland. It serves as the capital of the Grodno Region of the country. It houses one of the largest Roman Catholic population in the country and also a large Eastern Orthodox population. Grodno is also an important center of Polish culture. The churches of the city are known for their architectural magnificence.

Country safety index according to Numbeo(2017)





10th safest country in the world.

2. BELARUS



Minsk

Minsk is the capital and largest city of Belarus. The city population is close to 20 lakh making it 11th most populous city of Europe. Minsk is Belarus's cultural capital, with numerous museums and libraries. Largest library in the world National Library of Belarus is present in Minsk. Botanical garden in Minsk is one of the largest botanical gardens in Europe. Minsk is also ranked in one of the safest cities in the world. City is also a major educational hub and is home to Top universities like Belarusian State Medical University. With high ratings in cost of living, safety and environmental quality Minsk is a good place for Students to live.

Distance from Minsk to other major Cities

1. Minsk to Grodno = 300 km
2. Minsk to Gomel = 330 km
3. Minsk to Vitebsk = 291 km



Minsk : 19.7 Lakhs (2017)
Vitebsk : 3.6 Lakhs (2015)
Gomel : 5 Lakh (2013)
Grodno : 3.7 Lakh (2017)

Gomel

Gomel ranks second among the biggest cities in Belarus and is the administrative center of the Gomel Oblast. The state pays considerable attention to the health of the citizens of Gomel and thus encourages the development of sports facilities in the city.



BMU RECOMMENDS



BELARUSIAN STATE MEDICAL UNIVERSITY

Established in the year 1921 Belarusian State Medical University is a leading higher medical educational institution of the Republic of Belarus. It has international prestige and recognition for the quality of its teaching and research. BSMU has a practice-oriented approach to education that focuses more on practical studies in laboratories or tutorials than on theoretical studies. University has world class infrastructure with 42 clinical departments of the university (including 2 military medical faculties) located at 70 clinical bases of healthcare institutions in Minsk. The University regularly introduces modern methods of treatment and diagnosis into medical and educational processes. The University has accreditation from the Medical Council of India (MCI), WHO, the world Federation for Medical Education and FAMIER. BSMU has cooperation agreements with Universities of Poland, Canada, Sweden, Japan and Russia. Academic staff made up of first-class specialists, including more than 880 educators, of whom more than 64 percent have a scientific degree, including 3 corresponding members of national Academy of Sciences, 12 state Awards recipients and 16 Honored Scientists. Medium of instruction is English for the course duration of 6 years. University has affordable Tuition Fees and offers spacious Hostel rooms, Indian mess, campus activity centers such as gym, separate sports complex activity centers such as a gym, separate sports complex.

University Highlights

1. More Focus on Clinical Practice
2. Provide Cadavers for Dissection
3. 42 Clinical Departments
4. 6 Network Hospitals
5. 8 scientific groups and 6 research laboratories



BMU RECOMMENDS



VITEBSK STATE MEDICAL UNIVERSITY



Vitebsk State Medical University is the premier medical institution in the Republic of Belarus today. Its origin dates back to November, 1934. Vitebsk State Medical University is one of the most famous government Medical Universities in Belarus. VSMU is located in the city of Vitebsk in Belarus in East Europe. VSMU was founded in November 1934 and started enrolling foreign students in 1981. It has been in existence for over 75 years now and reckoned to be highly placed medical university in the whole of Europe. The academic plan is developed and maintained according to the European Qualification framework.

Reasons to Study Medicine at VSMU University

State own university which Maintains a high level of education compatible with European standards and experience the richness of Europe
 Hostel fees and cost of living, low and affordable in comparison to other places of equal standing.
 Total student population of 7000 including more than 150 Indian Students
 English medium curriculum



GOMEL STATE MEDICAL UNIVERSITY



The Gomel state medical university which was formerly known as Gomel State Medical Institute is public teaching university based in Gomel, Belarus. Gomel has four universities of different fields and one of them is Gomel state medical university. Today, Gomel State Medical University contains.

The main campus of Gomel State Medical University located in the downtown of Gomel with 18 adjacent clinical sites spread across the city. The clinical base of the University is one of the best in Belarus, where the advanced medical technologies on diagnostic and treatment of endocrinology, cardiologic, immunology, hematology, ophthalmologic, oncologic and other diseases are applied.

The faculty includes 276 members with more than third holding MD/PhD degree. For the years of its existence, the University has prepared about 1500 doctors in 54 medical specialties. The graduates of the University work in clinics of different cities in Belarus and other parts of Europe.

Gomel cooperates with educational and research medical centers on problems of medical staff preparation, medical research, organization of medical aid with leading universities of Russia, Ukraine, Sweden, Scotland, France, Germany, Poland, Japan etc.



GRODNO STATE MEDICAL UNIVERSITY



Grodno State Medical University was founded in 1958 and has been one of the leading medical institutions in the Republic of Belarus. The University is famous for its great educational emphasis and highly qualified teaching staff. At present there are over 50 doctors of medicine and professors, 108 assistant professors and 209 candidates of medicine are employed at the University. Grodno State Medical University collaborates with the medical institutions in Poland, Germany, Russia, the USA, Great Britain, Lithuania and many others. The University has hundreds of foreign students from over 30 different countries such as India, Lebanon, Nigeria, Pakistan, Poland, Greece, Lithuania, Armenia, Tunisia, Morocco, Egypt, Cameroon, Jordan, Mauritius, Sri-Lanka etc. are studying in Grodno State Medical University now.

BELARUS MEDICAL UNIVERSITIES FEES STRUCTURE (English Medium) 2021

UNIVERSITIES	Total First Year Package									Full Course	
	Tuition Fee Per Year		Hostel Fee Per Year		One time charges (only in 1st Year)		First Year Total		USD\$	INR	
	USD\$	INR	USD\$	INR	USD\$	INR	USD\$	INR			
Belarusian State Medical University	5,200	3,64,000	720	50,400	1840	1,28,800	7760	5,43,200	33,760	23,63,200	
Grodno State Medical University	4,600	3,22,000	720	35,000	1840	1,28,800	7160	5,01,200	30,160	21,11,200	
Vitebsk State Medical University	4,800	3,36,000	720	49,000	1840	1,28,800	7360	5,15,200	31,360	21,95,200	
Gomel State Medical University	4,370	3,05,900	720	49,000	1840	1,28,800	6930	4,85,000	28,780	20,14,600	

BELARUSIAN STATE UNIVERSITY MANAGEMENT COURSE FEE STRUCTURE (English Medium) 2021

UNIVERSITIES	Total First Year Package									Full Course	
	Tuition Fee Per Year		Hostel Fee Per Year		One time charges (only in 1st Year)		First Year Total		USD\$	INR	
	USD\$	INR	USD\$	INR	USD\$	INR	USD\$	INR			
BBA	3,300	2,31,000	720	50,400	1840	1,28,800	5,860	4,10,200	15,760	11,03,200	
MBA	5,500	3,85,000	720	50,400	1840	1,28,800	8,060	5,64,200	13,560	9,49,200	

- 1 USD = 70 INR (Rate of Calculation) At the time of payment the prevailing rate will be applied.
- One Time Charges includes Post Departure Services, 6 years local support in Belarus and Assistance in Documentation, Registration at the University, Medical Insurance and Visa Extension.
- From Second Year onwards only Medical Insurance & Visa Extension has to be paid.
- Food Expenses will be from \$100-120 per month depending on the student.
- Tuition Fee & Hostel fees are decided by the university and any changes in future, the student has to abide by it. Tuition fee can be paid semester wise.
- BMU Processing Fee which includes Counselling, Admission and Visa Processing Charges will be additional (First Year Only)



LIST OF SERVICES DURING YOUR ADMISSION

COUNSELLING

Counselling is the most important part of the admission process which help the student to identify their needs and preferences and allows us to suggest them the best medical university for them. That's our USP.

1. We help the parents and students to select the most suitable medical university abroad in the most preferable country according to their preference and budget.
2. We share the proper fee structure with all the charges incurred in the process and during the study period.

ADMISSION PROCESS

Admission process is where the student has decided the medical university after extensive counselling sessions with BMU Experts. Then we are in the position to finally move forward to the admission process.

1. We instruct the students about the documents required to apply in that particular university making sure not to miss any to avoid any delay.
2. Once the student provides all the documents either in physical form or virtually we communicate with the university and apply professionally.
3. Within 3-7 days we expect to hear from the university and get the admission letter. The same is forwarded to the student.

VISA PROCESS

Visa process is another most significant step to be performed with utmost care, all the required documents as per the laws and guidelines of the particular country are instructed to the student, simultaneously the visa section BMU prepares the later part which includes majorly translations and attestations

1. All documents are received by the BMU team from the student either physical handover or via courier (BlueDart) and are sent for attestations and legalisation.
2. Once the documents are ready the file is prepared as per the embassy of the country's norms.
3. The files are submitted by BMU personnel to the authorities which will then process admission.
4. Required communications are made to the Embassy and the University to ensure hassle free visa process.
5. The visa get stamped by the stipulated time period and handed over to the students.

POST DEPARTURE SERVICES

1. Airport pick up from the destination country
2. SIM card
3. Travel arrangements from the Airport to the hostel
4. Hostel Allotment
5. Welcome Meal
6. Documentation at the University
7. Assistance in opening Bank Account & Other services
8. Tourist visa assistance for Parents in Future



SCAN & PAY



Scan & Pay to book your seat in steps

DEPARTURE

VISA RECEIVING

VISA APPLICATION/ DOCUMENTATION

UNIVERSITY ADMISSION LETTER

REGISTRATION WITH BMU

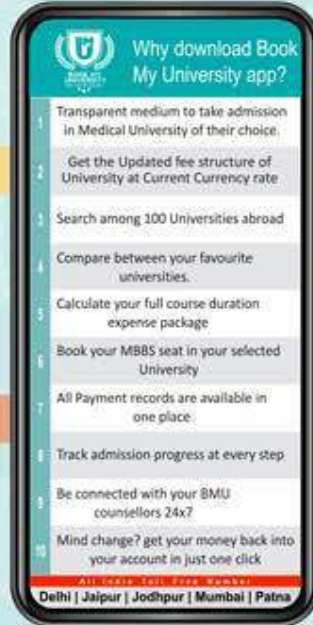


Download Book My University App StudyNation 360 Pvt. Ltd.



Apply through App

Compare Universities



Track Application Process

Keep Record Of Payments



Scan this QR Code to Download BMU App



SWITCH TO GREEN WITH BMU APP



SUPPORT US IN SAVING THE ENVIRONMENT

Bookmyuniversity (Studynation 360 Pvt. Ltd.)



Head Office : Delhi
B-25 (Second Floor), Lajpat Nagar 2,
Above Bandhan Bank, Delhi – 110024

OUR BRANCHES :



Mumbai Office :
F-25, Commerce Centre
Next to AC Market, Mumbai Central (West)
Tardeo, Mumbai - 400034, Maharashtra.



Jaipur Office :
C-13, Vaishali Marg, Vaishali Nagar,
Above Karnataka Bank,
Jaipur -302021, Rajasthan.



Jodhpur Office :
C-5, Mahaveer Colony,
Near Shivam Hospital, 4 Floor,
Above BMU Tyari Coaching Institute,
Jodhpur-342001, Rajasthan.



All India Toll Free : **18002708009**



www.bookmyuniversity.com



info@bookmyuniversity.com



https://twitter.com/yukti_belwal



<https://www.youtube.com/yuktibelwal>



<https://www.facebook.com/bookmyuniversity>



Yukti Belwal's Whatsapp No : **+91 88606 37009**

